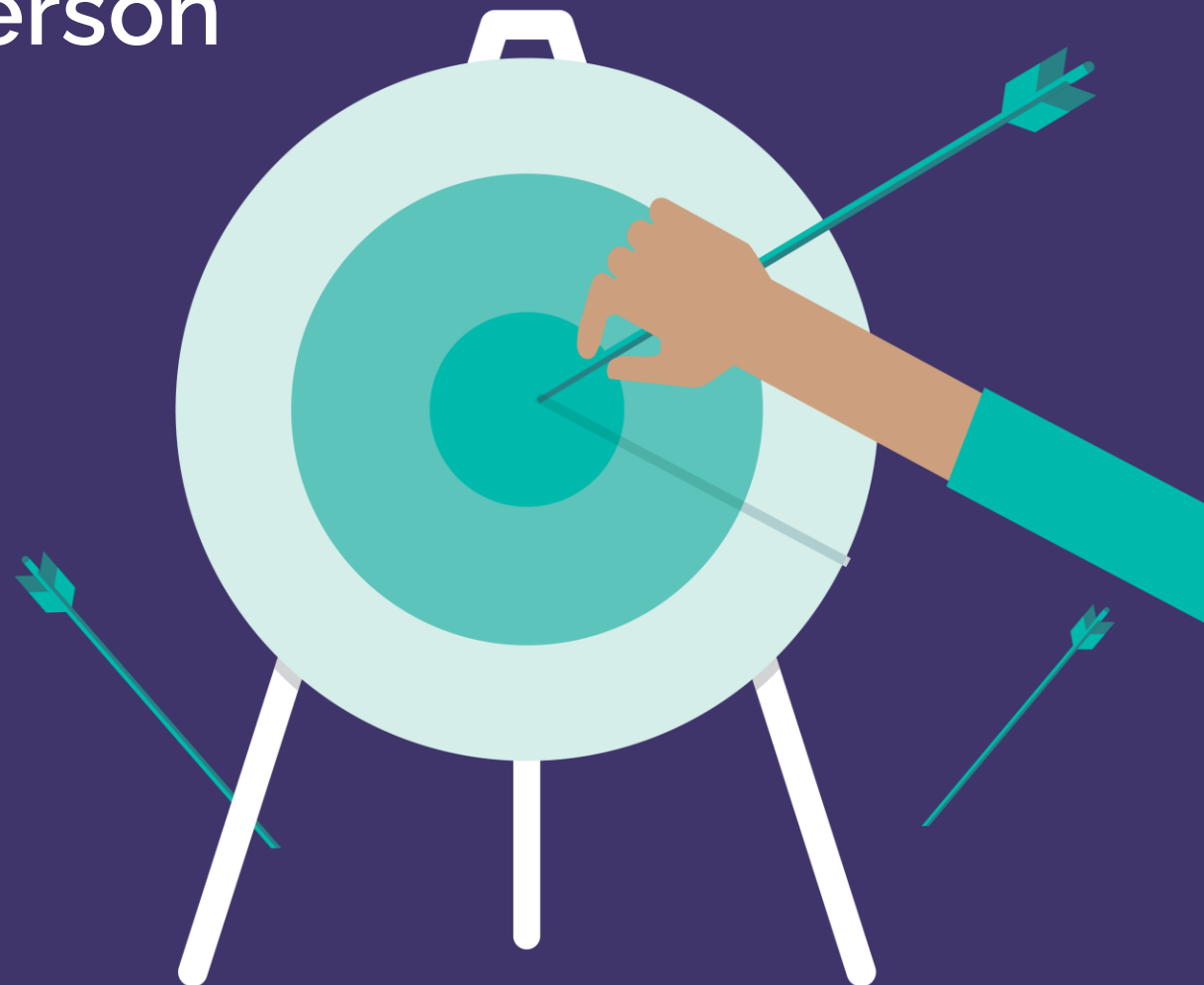


TAKE
YOUR
PLACE

Supporting Your Young Person Post-18 Pathways

George Pettitt
Deputy Headteacher
Director of Athena Sixth Form College



FOLLOW @TAKEYOURPLACEHE

Today We Will Cover:

TAKE
YOUR
PLACE



University



Apprenticeships

University

TAKE
YOUR
PLACE



How will my young person afford university?

Living cost loans

Tuition fee loans

Scholarships and Bursaries



GOV.UK

UCAS

How does my young person apply to university?

TAKE
YOUR
PLACE

UCAS:

5 choices

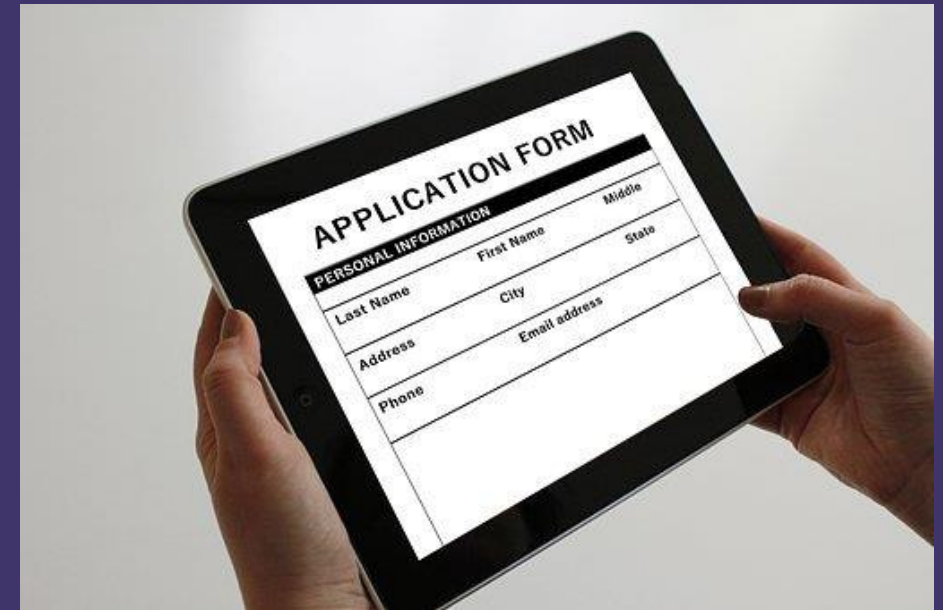
Small application fee

Early deadlines for competitive courses

Personal statement needed

Entry Requirements

A level results day and clearing



OPEN DAYS

TAKE
YOUR
PLACE

SUMMER
SCHOOLS

YR 12/L3 YR1

EARLY DEADLINE

YR13/L3 Y2

JUN JULY AUG SEPT OCT NOV DEC JAN FEB MAR APRIL MAY

PERSONAL STATEMENT

STUDENT FINANCE

UNIVERSITY
RESEARCH

MAIN UCAS
DEADLINE

FIRM &
INSURANCE



What study options does my young person have?



Staying local or moving away

Over 35,000 courses listed on UCAS website

Year in industry

Year abroad

Foundation year

Joint honours

How does my young person study at university?

Lectures

Seminars

Practical

Independent study

Problem based learning



What support is available for my young person?

Academic and study support

Accommodation

Fitness and physical health

Student life

Money management

Mental health support



How might university help my young person in the future?

TAKE
YOUR
PLACE

Graduates have higher rates of employment than non-graduates

The national average salary for a graduate scheme is £26,949

On average, graduates earn 20% more in their lifetime earnings than those without a degree

A degree also opens the door to many careers ...

The background of the image is a technical drawing, likely an architectural or engineering plan, featuring various lines, circles, and text. A pen is visible in the lower right corner, pointing towards the center of the image. The overall tone is professional and technical.

**POLICE
OFFICER**

PHYSIOTHERAPIST

**SOCIAL
WORKER**

TEACHER

**CLINICAL
PSYCHOLOGIST**

ARCHITECT

DOCTOR

LAWYER

PHARMACIST

What's next for my young person?

- ☐ Identify your interests and skills
- ☐ Explore career opportunities
- ☐ Research study options
- ☐ Think about extra and super-curricular activities

